



- LOCATION:** 528 Amalia Avenue, Los Angeles, Ca 90022
- SIZE:** 2,000 +/- square feet of building space on
4,678 +/- of land
- PRICE:** \$300,000.00
- ZONING:** LC-C2
- PARKING:** Six (6) parking spaces plus excellent street parking
- COMMENTS:**
- * Great owner/user opportunity
 - * Former dental office with equipment still in place
 - * Includes a reception area, 3 restrooms, lunchroom,
2 offices, x-ray and 5 operatories.
 - * Ideal for office, medical or dental use.

FOR MORE INFORMATION OR A TOUR, PLEASE CONTACT:

Richard L. Paley

richard@paleycommercial.com

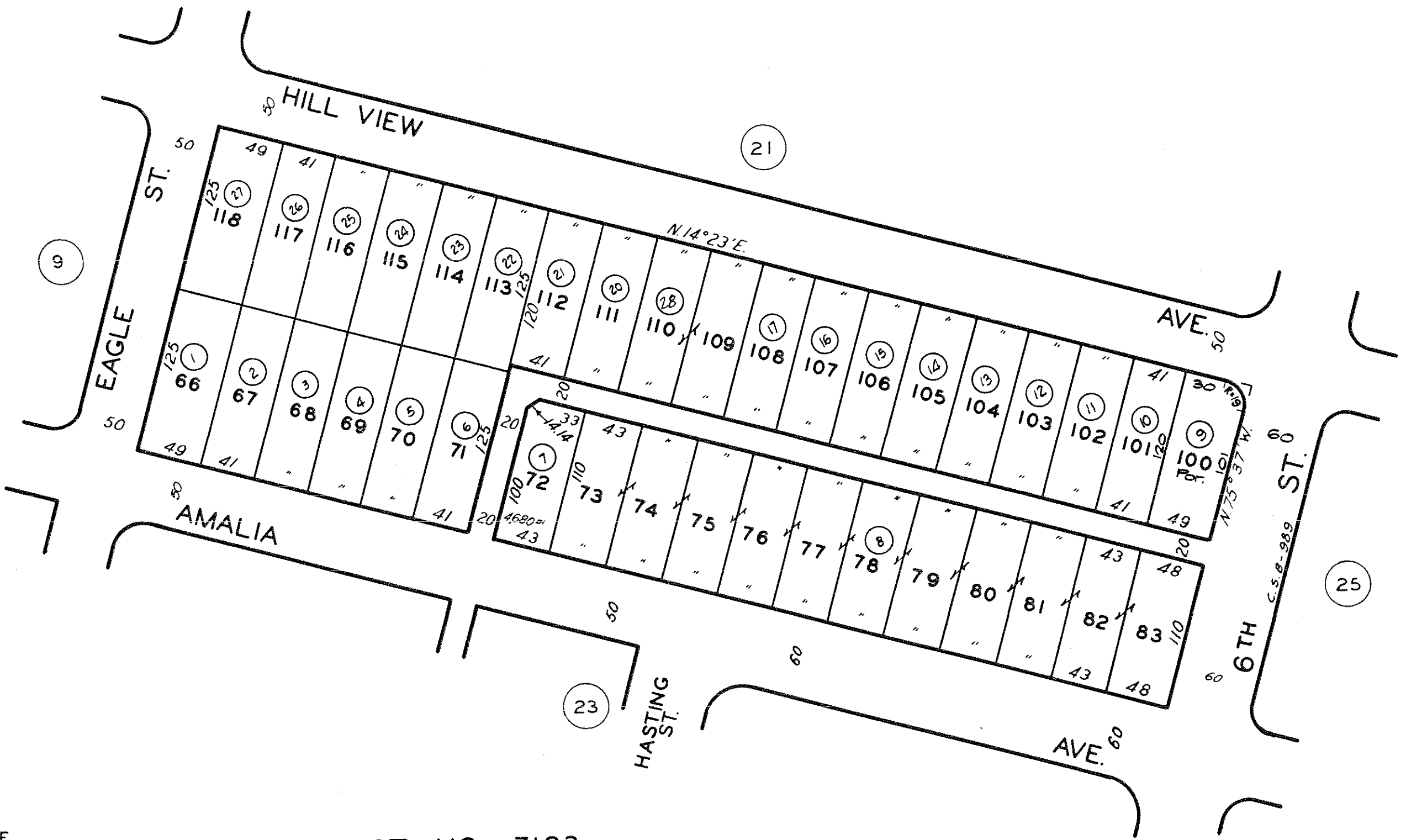
DRE: 00966353

Bernie Kaufman

bernie@paleycommercial.com

DRE: 00767764

19507 Ventura Boulevard, Tarzana, Ca 91356 ~ Phone (818) 343-3000 ~ Fax (818) 343-3311
www.paleycommercial.com



CODE
 1010

TRACT NO. 7193
 M.B. 78-100

FOR PREV. ASSM'T. SEE:
 6341-22